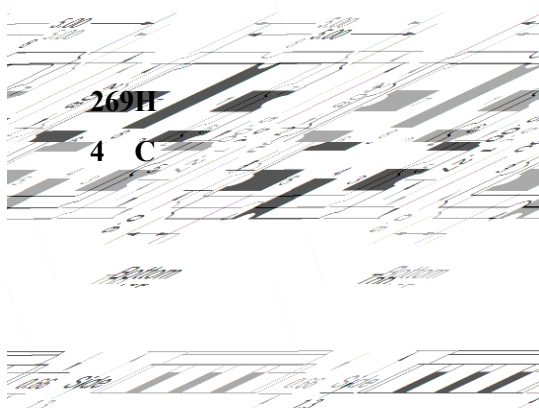


■ **Electrical Specifications**

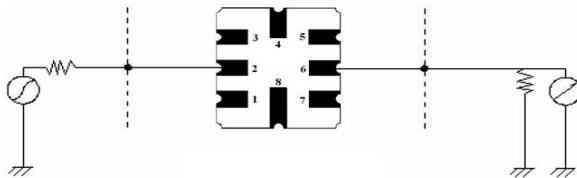
Item	Unit	Condition	Min	Typ	Max
Center Frequency	MHz	F <sub>o</sub>	269.5		
Pass Band Width	MHz	265.5 ~ 273.5MHz	8.0		
Insertion Loss	dB	Passband	-	2.0	3.5
Ripple Deviation	dB	Passband	-	0.8	1.5
Stop Band Rejection (Absolute Attenuation)	dB	@168.5 ~ 220 MHz	30	35	-
		@300 ~ 370 MHz	30	35	-
VSWR	-	Passband	-	2.0	2.5
Terminating Impedance	Ω	50			
Maximum DC Voltage	V	5			
Maximum Input Power	dBm	10			
Operating Temperature	℃	-40 ~ +85			
Storage Temperature	℃	-40 ~ +85			

■ **Package Dimension (unit : mm)**



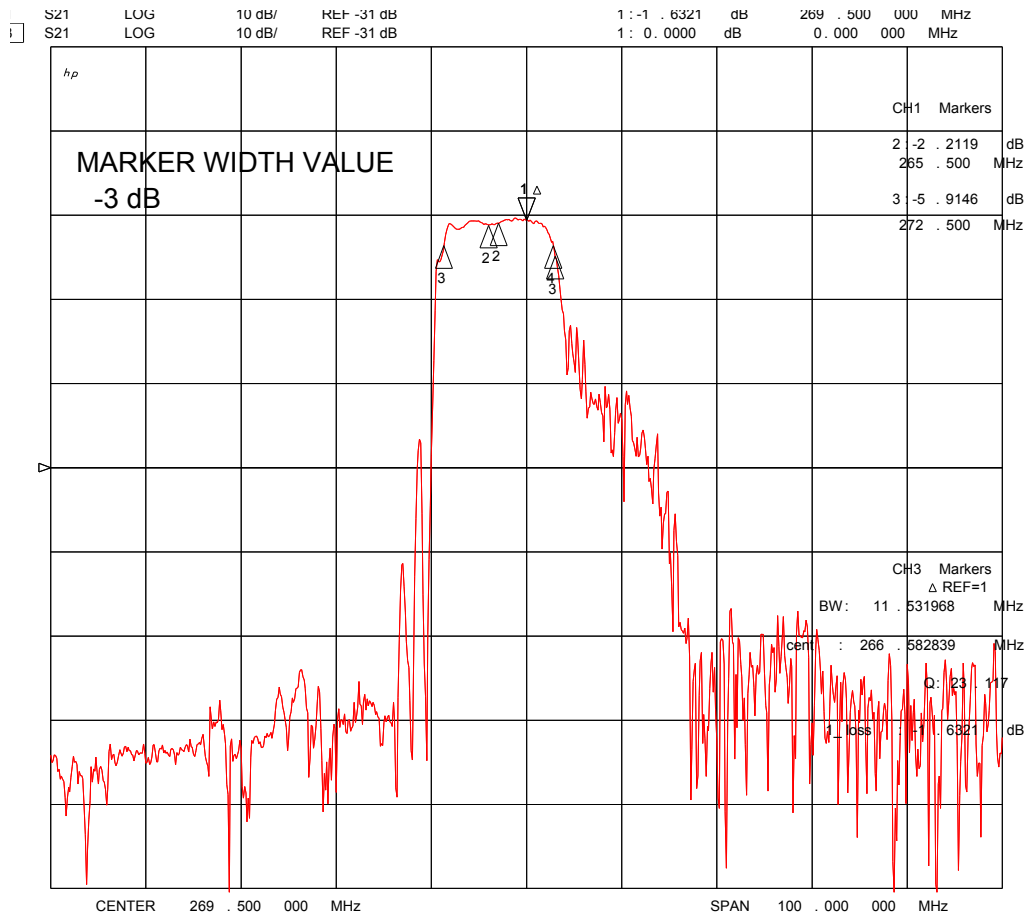
269 : FREQ. RANGE  
H : MODEL DESIGN TYPE  
4 : DATE CODE (YEAR)  
Ex) 2010 =>0, 2011=>1.....2019=>9  
C : DATE CODE (MONTH)


■ **Matching Configuration**

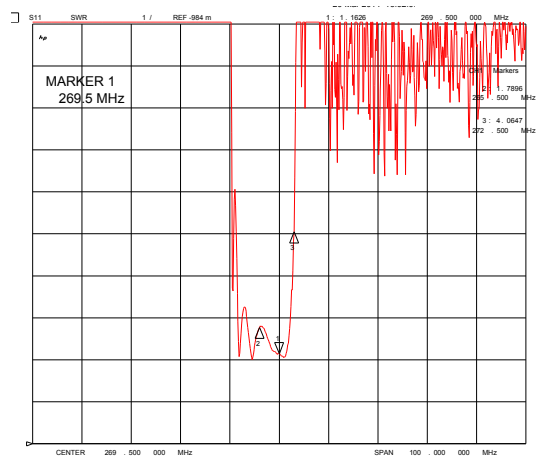
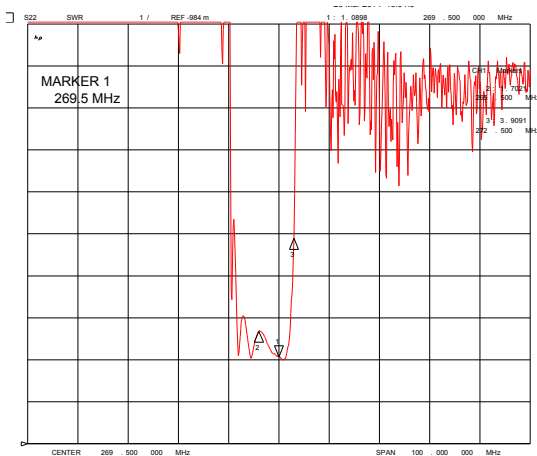
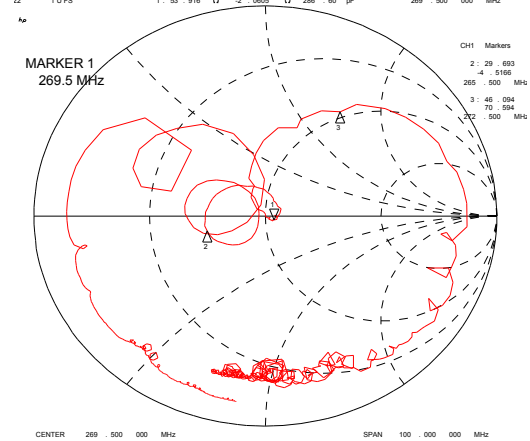
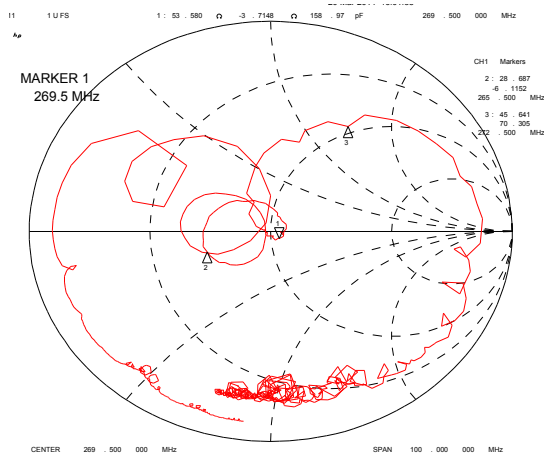
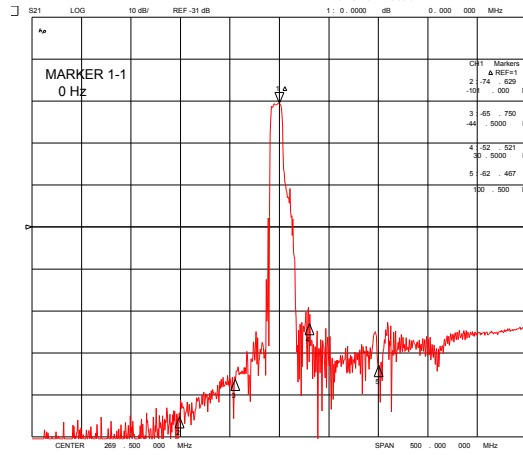
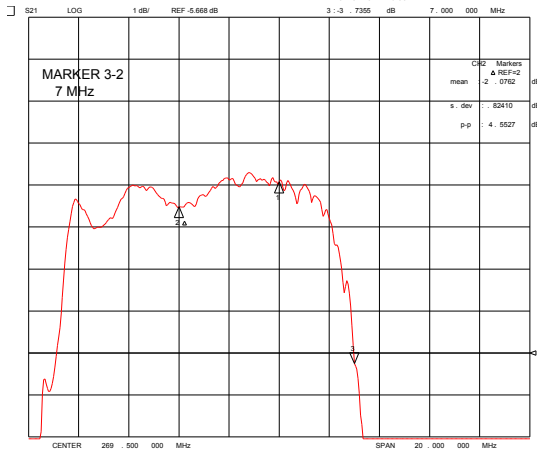



**No Matching Required.**  
**Source / Load Impedance = 50Ω**  
**Ambient Temperature = 25°C**

■ **Simulation Graph**



	#C-203, Bundang Technopark, 145 Yatap-dong, Bundabg_gu, Seongnam, Gyeonggi- 463-070, Korea TEL : 82-31-703-2086, FAX : 821-31-703-2124	Part No.	CT269HM3	
		Rev. Date	2014-03-21	
		Rev.	R0	2/3



	<p>#C-203, Bundang Technopark, 145 Yatap-dong, Bundabg_gu, Seongnam, Gyeonggi-463-070, Korea TEL : 82-31-703-2086, FAX : 821-31-703-2124</p>	Part No.	CT269HM3	
		Rev. Date	2014-03-21	
		Rev.	R0	3/3